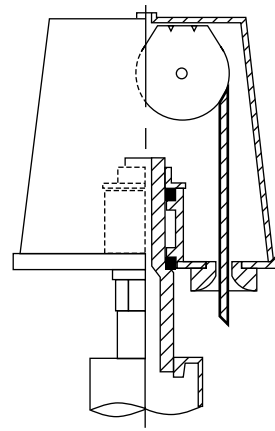
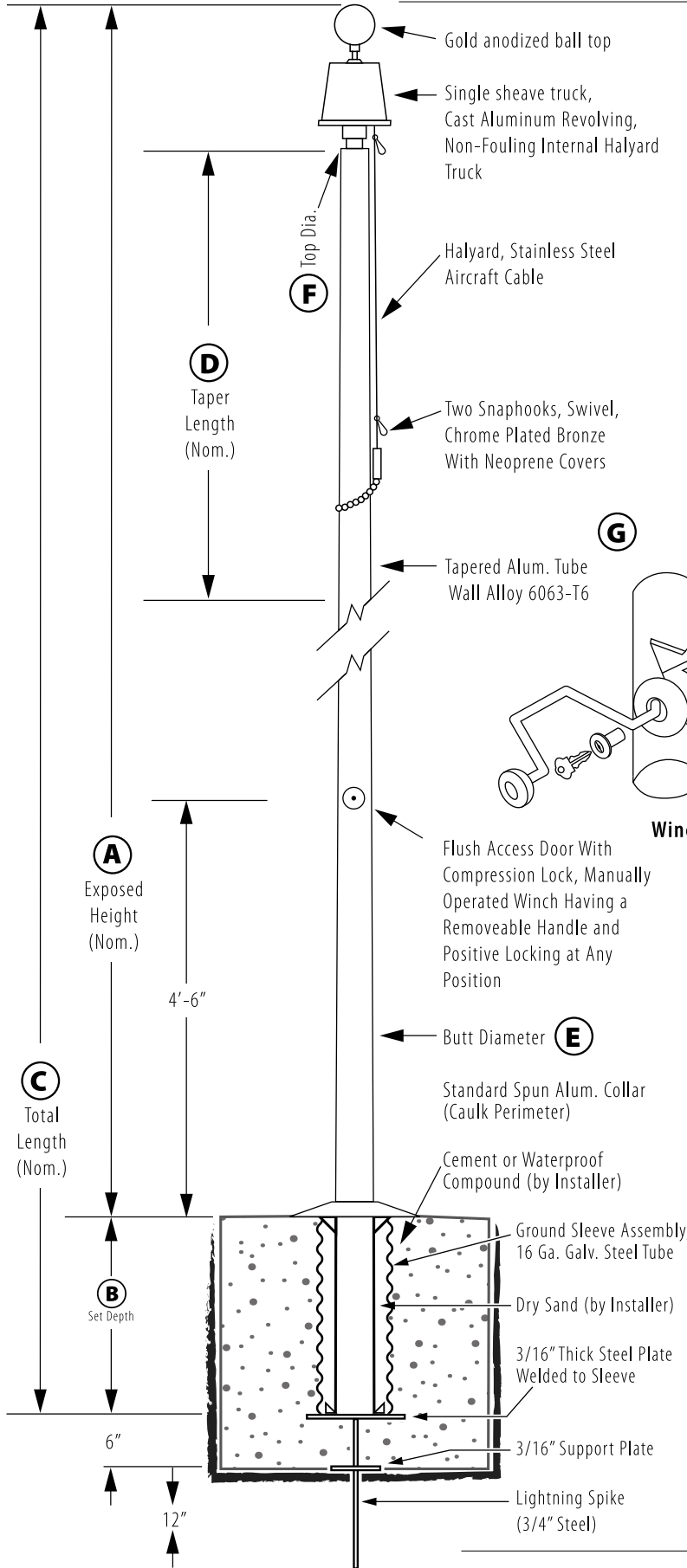


# Internal Winch - Ground Set

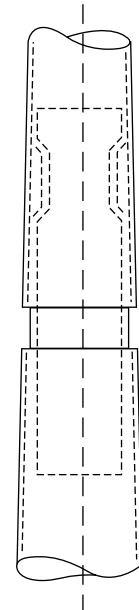
Model # IWM35D72-AC



**Revolving Non-Fouling Internal Halyard Truck**  
 Cast Aluminum Body, 26 Stainless Steel Ball Bearings, 2-1/2" Diameter Plate Steel Sheave.



**Winch Detail**



Customer Name:

Rep Name:

Architect Name:

Project:

Location:

PO Number:

Quantity:

Notes:

<b>A - Exposed Height</b>	35 ft.
<b>B - Set Depth</b>	3 ft. 6 in.
<b>C - Total Length</b>	38 ft. 6 in.
<b>D - Taper</b>	19 ft. 3 in.
<b>E - Butt Diameter</b>	7 in.
<b>F - Top Diameter</b>	3 1/2 in.
<b>G - Wall Thickness</b>	0.188 in.

**Finish:**  
Anodized, Medium Bronze

**Piece: 2**

**Accessories:**  
Gold anodized ball top, standard collar

All shafts with overall length of 33' or more are shipped in **two sections**

1-1/2" maximum shop gap allowed for field fitting (ram for tight joint).

*Joint occurs on 2 or more piece flagpoles.*