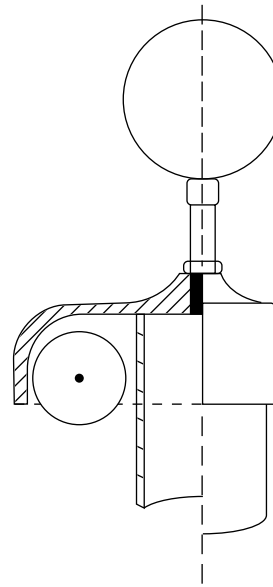
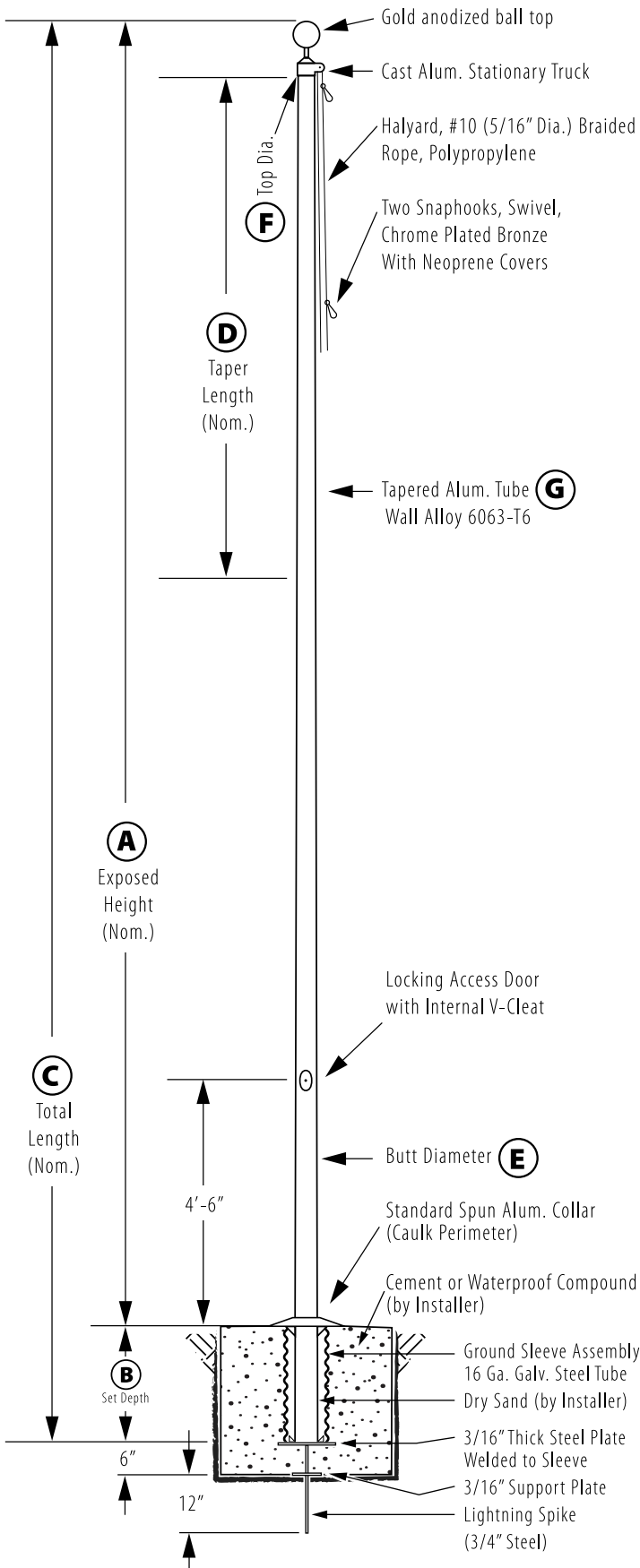
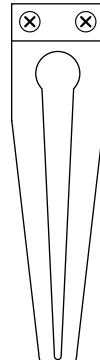


# Internal V-Cleat - Ground Set

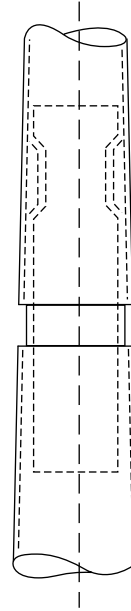
Model # IVC35C72-AA



**Stationary Truck Detail**  
Cast Aluminum Body



**V-Cleat**



All shafts with overall length of 33' or more are shipped in **two sections**

1-1/2" maximum shop gap allowed for field fitting (ram for tight joint)

*Joint occurs on 2 or more piece flagpoles.*

|  |              |
|--|--------------|
| Customer Name:   |              |
| Rep Name:  |              |
| Architect Name:  |              |
| Project:   |              |
| Location:  |              |
| PO Number:   |              |
| Quantity:  |              |
| Notes:   |              |
| <b>A - Exposed Height</b>                                      | 35 ft.       |
| <b>B - Set Depth</b>   | 3 ft. 6 in.  |
| <b>C - Total Length</b>  | 38 ft. 6 in. |
| <b>D - Taper</b>   | 19 ft. 3 in. |
| <b>E - Butt Diameter</b>                                       | 7 in.        |
| <b>F - Top Diameter</b>  | 3 1/2 in.    |
| <b>G - Wall Thickness</b>                                      | 0.156 in.    |
| <b>Finish:</b><br>Anodized, Clear                              |              |
| <b>Piece:</b> 2  |              |
| <b>Accessories:</b><br>Gold anodized ball top, standard collar |              |