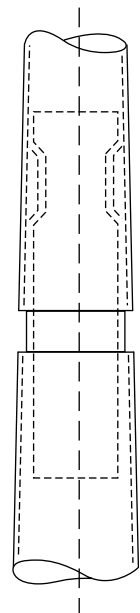
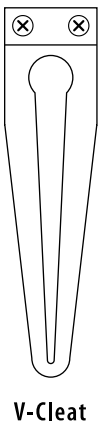
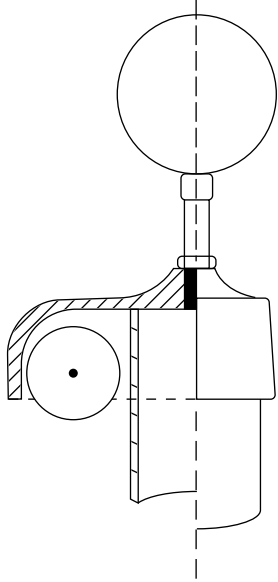
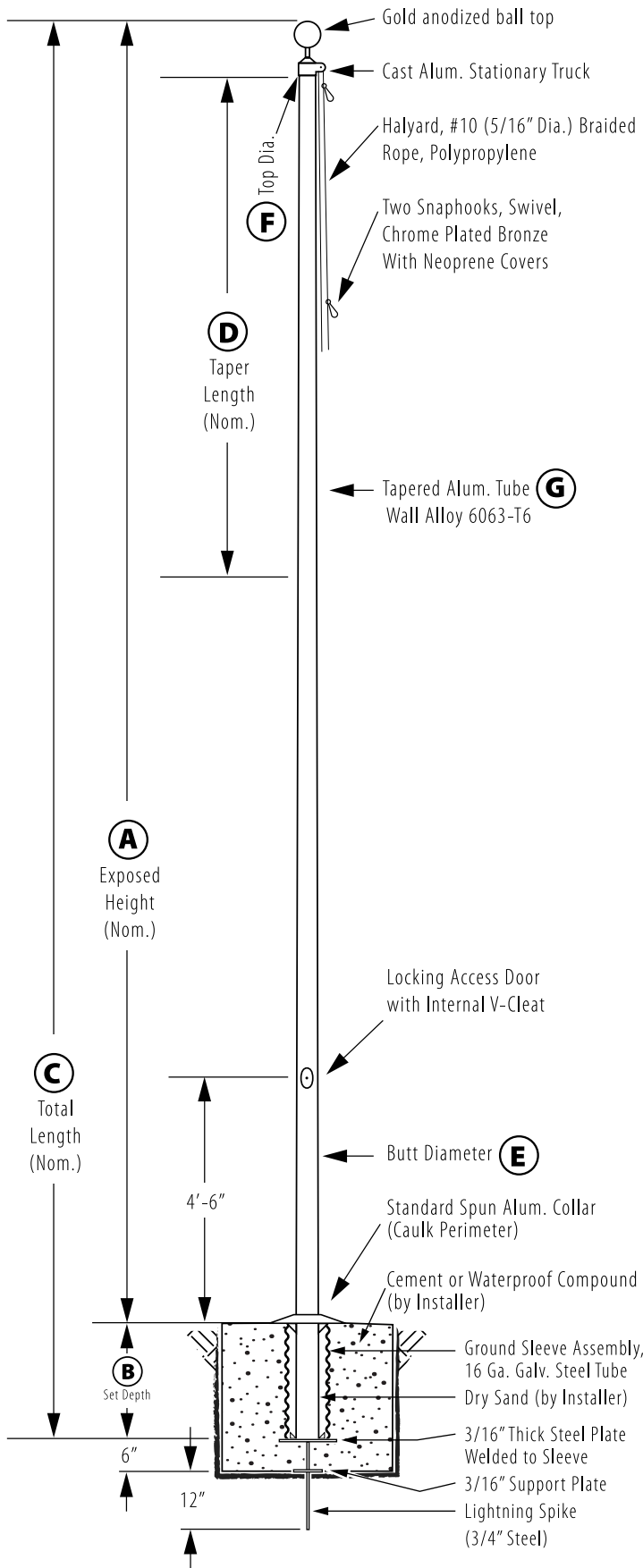


# Internal V-Cleat - Ground Set

Model # IVC35C62-AD



All shafts with overall length of 33' or more are shipped in **two sections**

1-1/2" maximum shop gap allowed for field fitting (ram for tight joint)

*Joint occurs on 2 or more piece flagpoles.*

Customer Name: \_\_\_\_\_

Rep Name: \_\_\_\_\_

Architect Name: \_\_\_\_\_

Project: \_\_\_\_\_

Location: \_\_\_\_\_

PO Number: \_\_\_\_\_

Quantity: \_\_\_\_\_

Notes: \_\_\_\_\_

|                           |              |
|---------------------------|--------------|
| <b>A - Exposed Height</b> | 35 ft.       |
| <b>B - Set Depth</b>      | 3 ft. 6 in.  |
| <b>C - Total Length</b>   | 38 ft. 6 in. |
| <b>D - Taper</b>          | 13 ft. 9 in. |
| <b>E - Butt Diameter</b>  | 6 in.        |
| <b>F - Top Diameter</b>   | 3 1/2 in.    |
| <b>G - Wall Thickness</b> | 0.156 in.    |

**Finish:**  
Anodized, Dark Bronze

**Piece:** 2

**Accessories:**  
Gold anodized ball top, standard collar