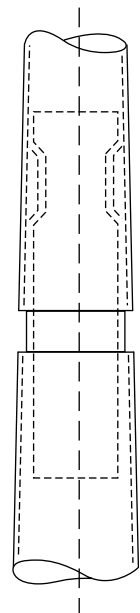
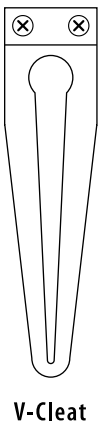
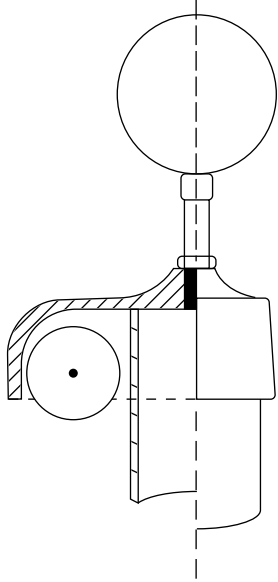
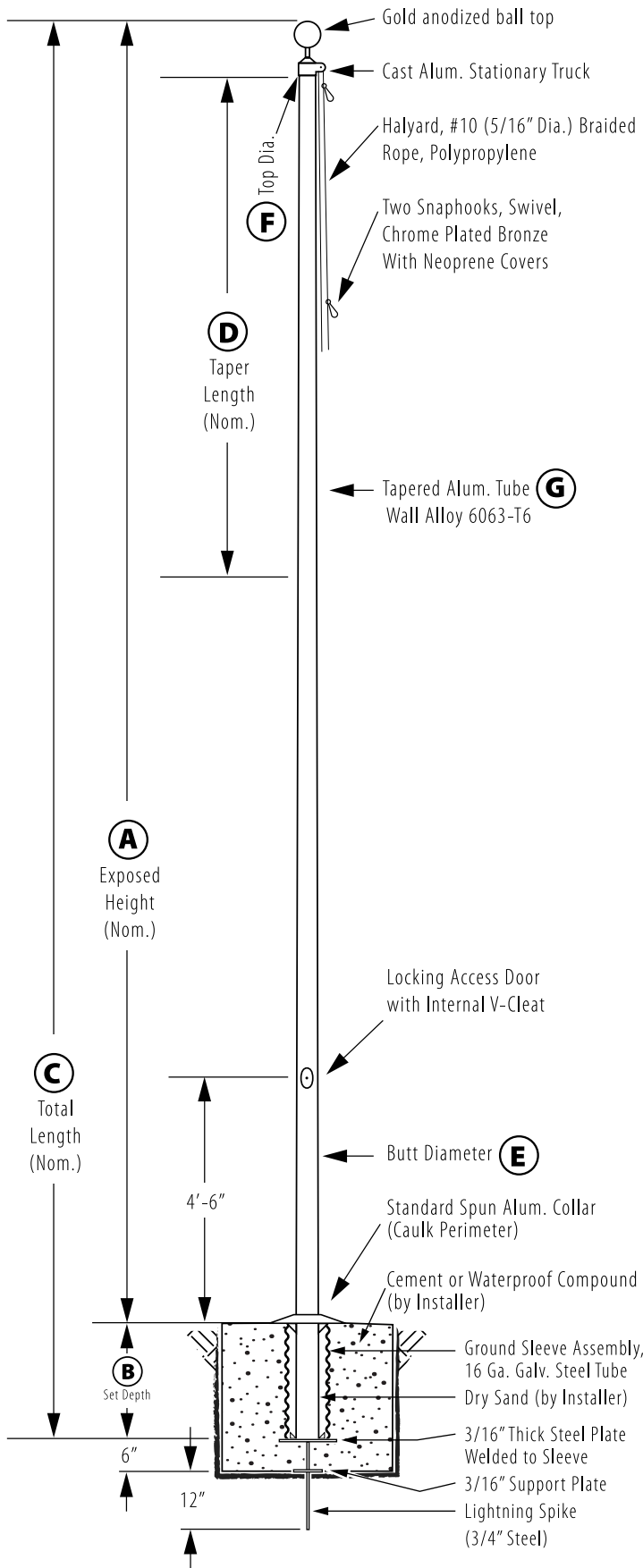


Internal V-Cleat - Ground Set

Model # IVC25B51-02



All shafts with overall length of 33' or more are shipped in **two sections**

1-1/2" maximum shop gap allowed for field fitting (ram for tight joint)

Joint occurs on 2 or more piece flagpoles.

| | |
|--|--------------|
| Customer Name: | |
| Rep Name: | |
| Architect Name: | |
| Project: | |
| Location: | |
| PO Number: | |
| Quantity: | |
| Notes: | |
| A - Exposed Height | 25 ft. |
| B - Set Depth | 2 ft. 6 in. |
| C - Total Length | 27 ft. 6 in. |
| D - Taper | 11 ft. |
| E - Butt Diameter | 5 in. |
| F - Top Diameter | 3 in. |
| G - Wall Thickness | 0.125 in. |
| Finish: Satin Aluminum, 80 Grit | |
| Piece: 1 | |
| Accessories: Gold anodized ball top, standard collar | |