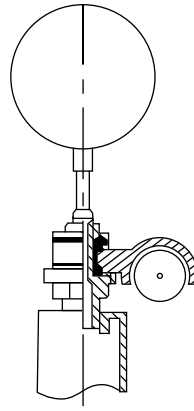
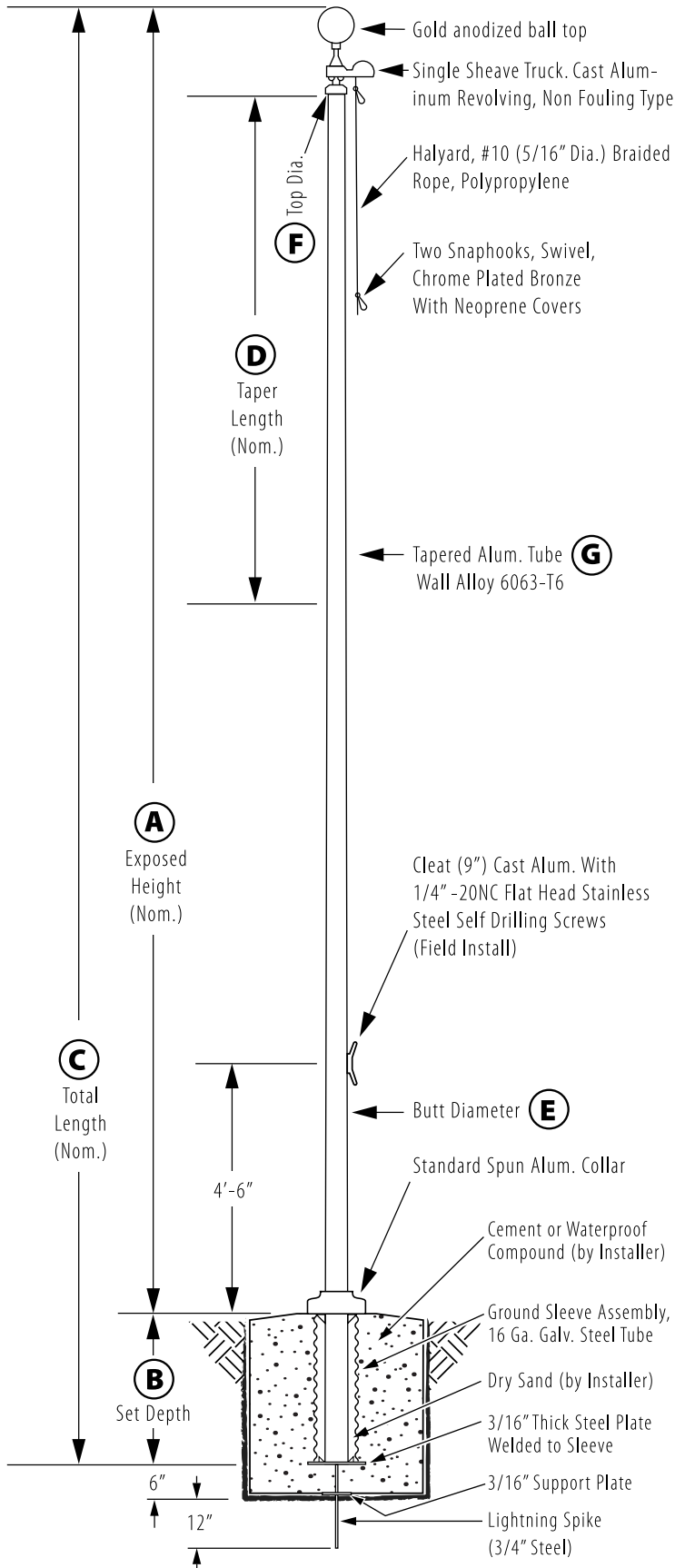


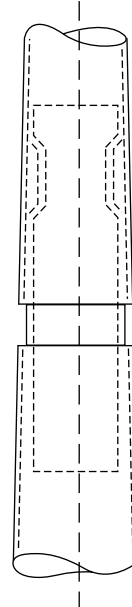
# External Revolving - Ground Set

Model # ESR70G13-AA



### Truck Detail

Aluminum body, Stainless Steel Ball Bearings, Aluminum Sheave, Cast Aluminum Spindle



All shafts with overall length of 33' or more are shipped in **two sections**

1-1/2" maximum shop gap allowed for field fitting (ram for tight joint)

*Joint occurs on 2 or more piece flagpoles.*

Customer Name:

Rep Name:

Architect Name:

Project:

Location:

PO Number:

Quantity:

Notes:

<b>A - Exposed Height</b>	70 ft.
<b>B - Set Depth</b>	7 ft.
<b>C - Total Length</b>	77 ft.
<b>D - Taper</b>	60 ft.
<b>E - Butt Diameter</b>	10 in.
<b>F - Top Diameter</b>	4 in.
<b>G - Wall Thickness</b>	0.312 in.

**Finish:**  
Anodized, Clear

**Piece:** 3

**Accessories:**  
Gold anodized ball top,  
standard collar