

# External Revolving - Ground Set

Model # ESR60D13-02

Customer Name: \_\_\_\_\_

Rep Name: \_\_\_\_\_

Architect Name: \_\_\_\_\_

Project: \_\_\_\_\_

Location: \_\_\_\_\_

PO Number: \_\_\_\_\_

Quantity: \_\_\_\_\_

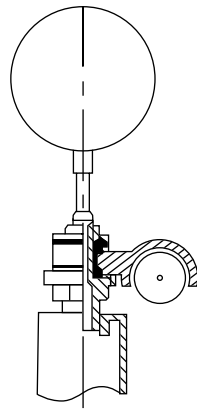
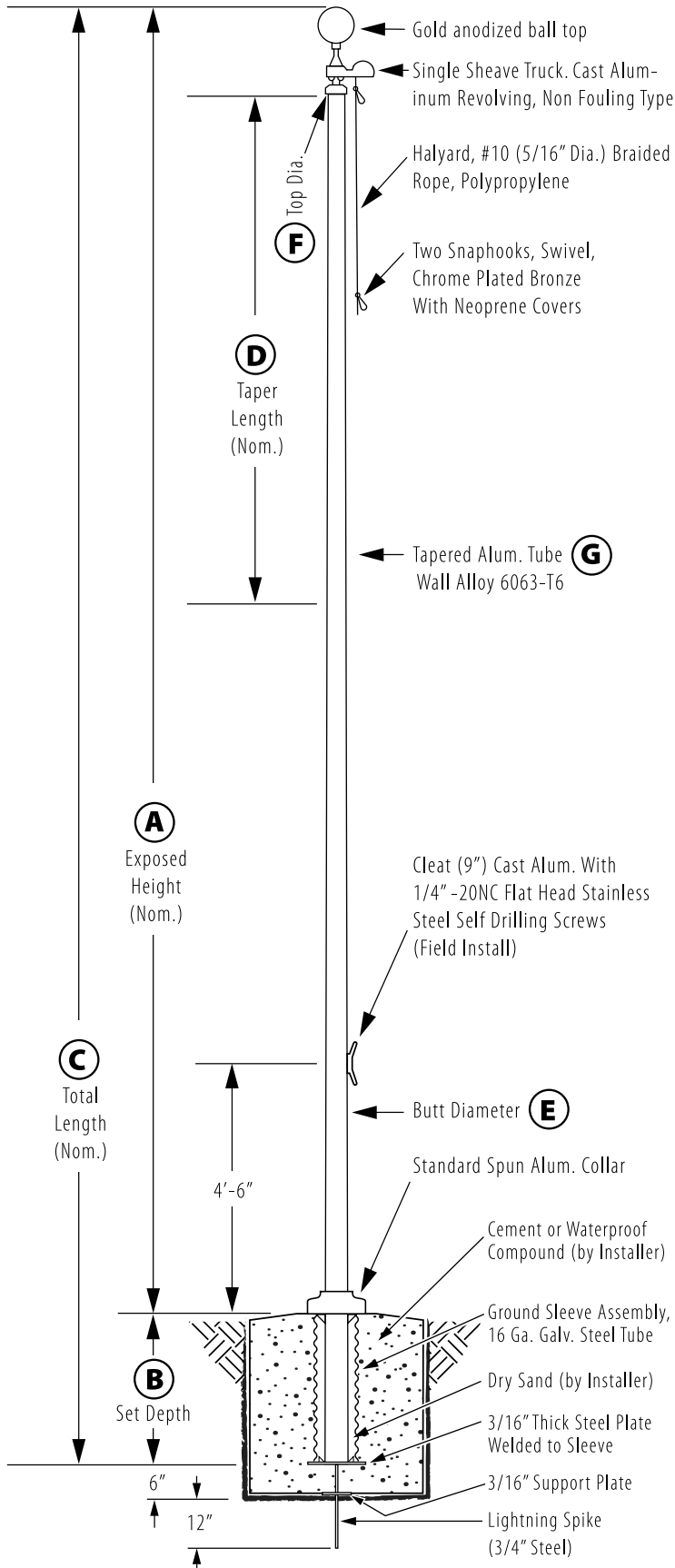
Notes: \_\_\_\_\_

<b>A - Exposed Height</b>	60 ft.
<b>B - Set Depth</b>	6 ft.
<b>C - Total Length</b>	66 ft.
<b>D - Taper</b>	33 ft.
<b>E - Butt Diameter</b>	10 in.
<b>F - Top Diameter</b>	4 in.
<b>G - Wall Thickness</b>	0.188 in.

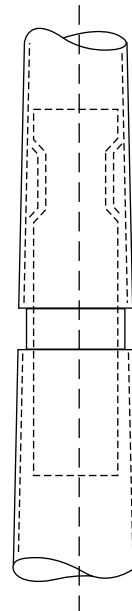
**Finish:**  
Satin Aluminum, 80 Grit

**Piece:** 3

**Accessories:**  
Gold anodized ball top, standard collar



**Truck Detail**  
Aluminum body, Stainless Steel Ball Bearings, Aluminum Sheave, Cast Aluminum Spindle



All shafts with overall length of 33' or more are shipped in **two sections**

1-1/2" maximum shop gap allowed for field fitting (ram for tight joint)

Joint occurs on 2 or more piece flagpoles.