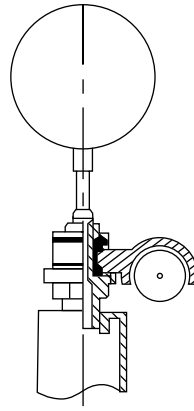
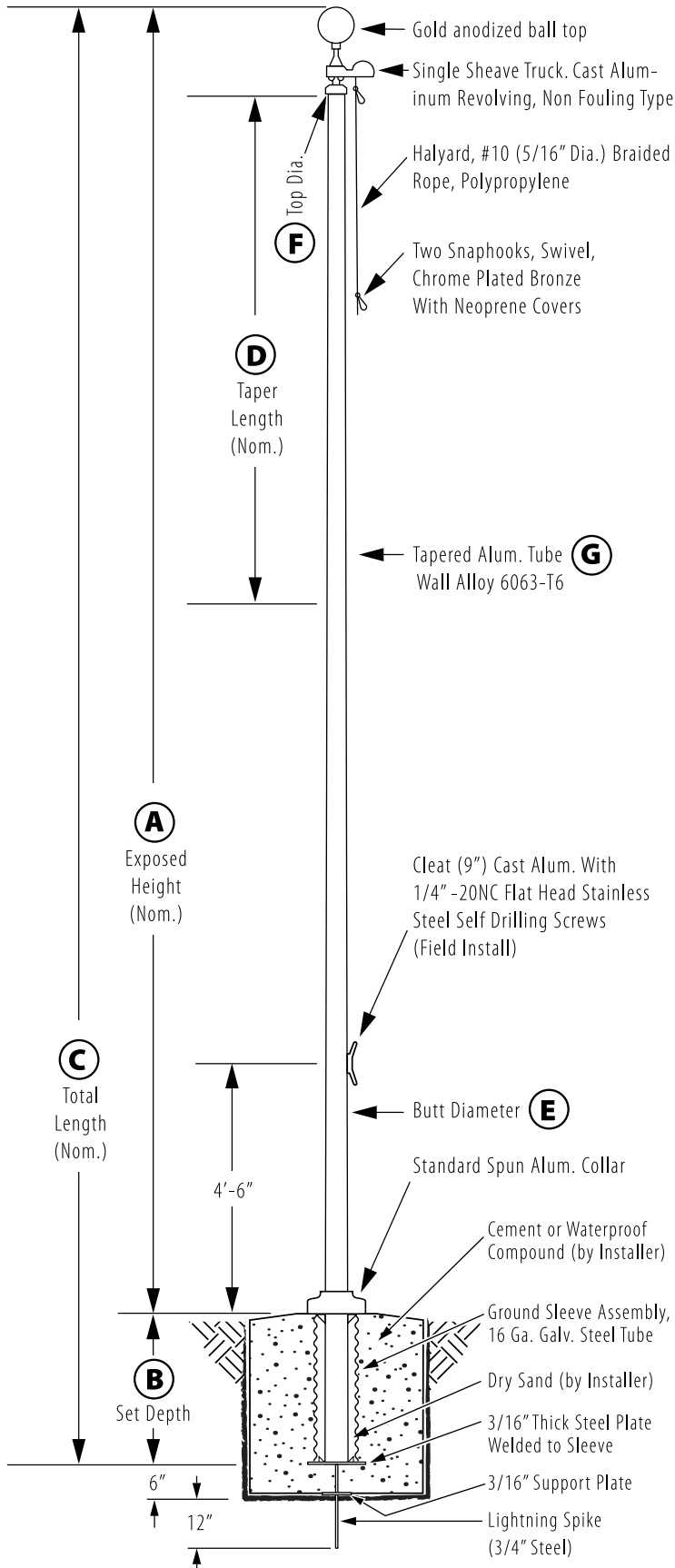


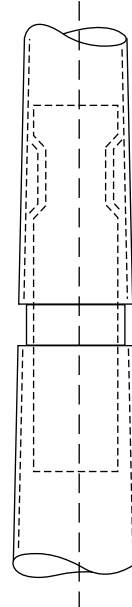
External Revolving - Ground Set

Model # ESR35C62-AC



Truck Detail

Aluminum body, Stainless Steel Ball Bearings, Aluminum Sheave, Cast Aluminum Spindle



All shafts with overall length of 33' or more are shipped in **two sections**

1-1/2" maximum shop gap allowed for field fitting (ram for tight joint)

Joint occurs on 2 or more piece flagpoles.

Customer Name:

Rep Name:

Architect Name:

Project:

Location:

PO Number:

Quantity:

Notes:

| | |
|---------------------------|--------------|
| A - Exposed Height | 35 ft. |
| B - Set Depth | 3 ft. 6 in. |
| C - Total Length | 38 ft. 6 in. |
| D - Taper | 13 ft. 9 in. |
| E - Butt Diameter | 6 in. |
| F - Top Diameter | 3 1/2 in. |
| G - Wall Thickness | 0.156 in. |

Finish:
Anodized, Medium Bronze

Piece: 2

Accessories:
Gold anodized ball top, standard collar